

# Elevated Warehouse Control Rooms

## Case Study

**Application:** Warehouse Control Rooms  
(Elevated on 25' High Mezzanine)

**Product:** OmniFlex (67' x 10' and 67' x 30')

**Benefits Provided:**

- ✓ Safe, Comfortable Work Area
- ✓ Installation with Minimal Disruption



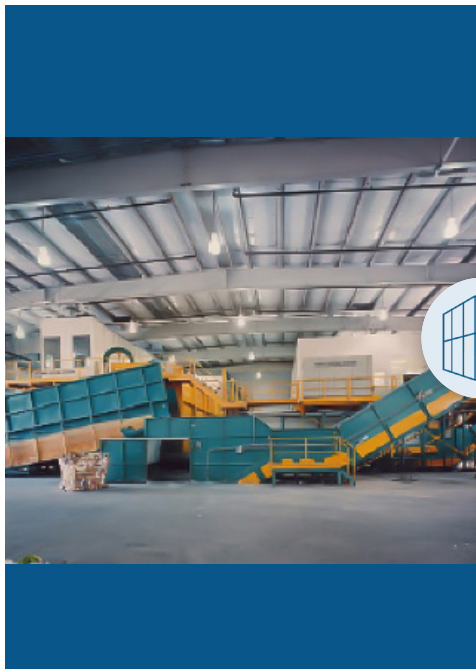
### The Situation

Our client needed to construct two control rooms raised 25 feet off the warehouse floor to provide a clean, safe, and air-conditioned work space.



### The Challenge

The recycling operation had to continue during construction without any significant interruptions so the client really wanted to utilize a turn-key system that could be installed very quickly.



### The Solution

The client assumed that there may be some difficulties in designing and constructing control rooms on a mezzanine level raised 25 feet above the warehouse floor.

Based on initial designs, they eliminated stick construction because of the time and disruption it would cause. In contrast, PortaFab's local distributor offered a complete modular package including the wall systems, ceilings, mezzanines, lighting, electrical, and cooling required to construct and configure the two interior control rooms with minimal disruption to plant operation. Plus, the modular option offered a tax break not available with the conventional construction.

The client found PortaFab's modular buildings to be the ideal solution. Lighting, electrical panels, and prefabricated walls were delivered in one shipment ready for installation and the local dealer was able to install the two invoices quickly and with minimal disruption to ongoing operations.