

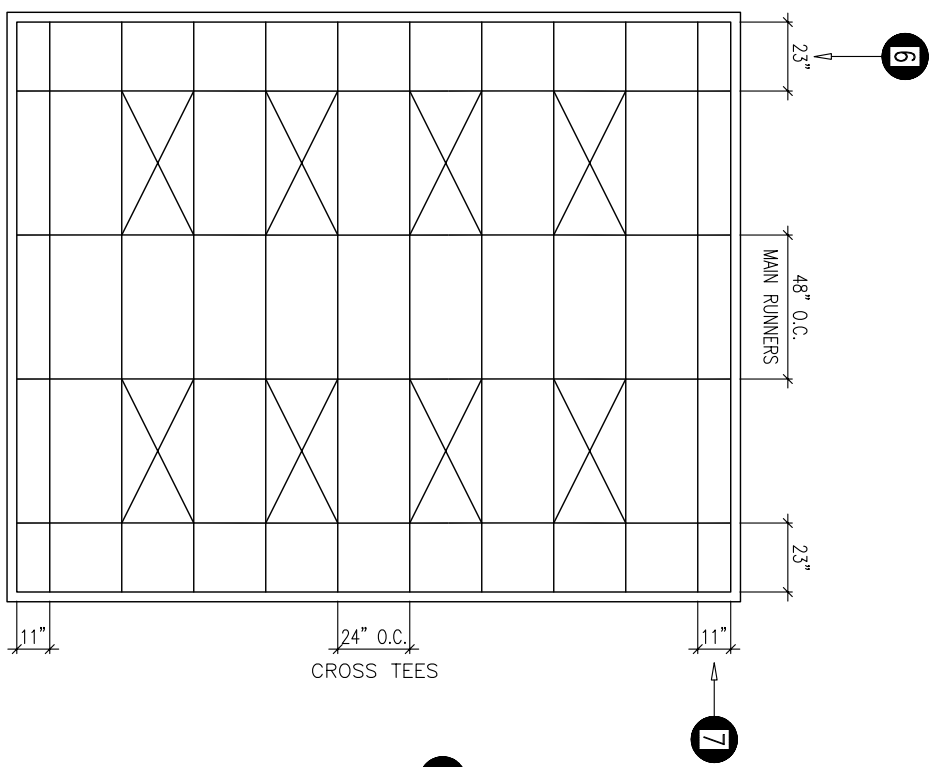
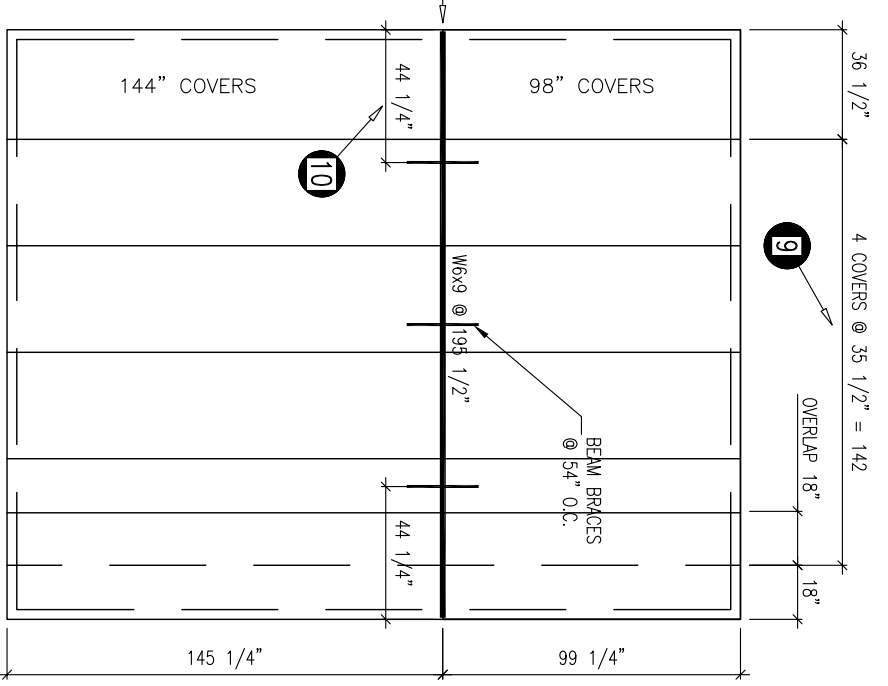
REV.	DESCRIPTION	DATE

PORTAFAB CORPORATION

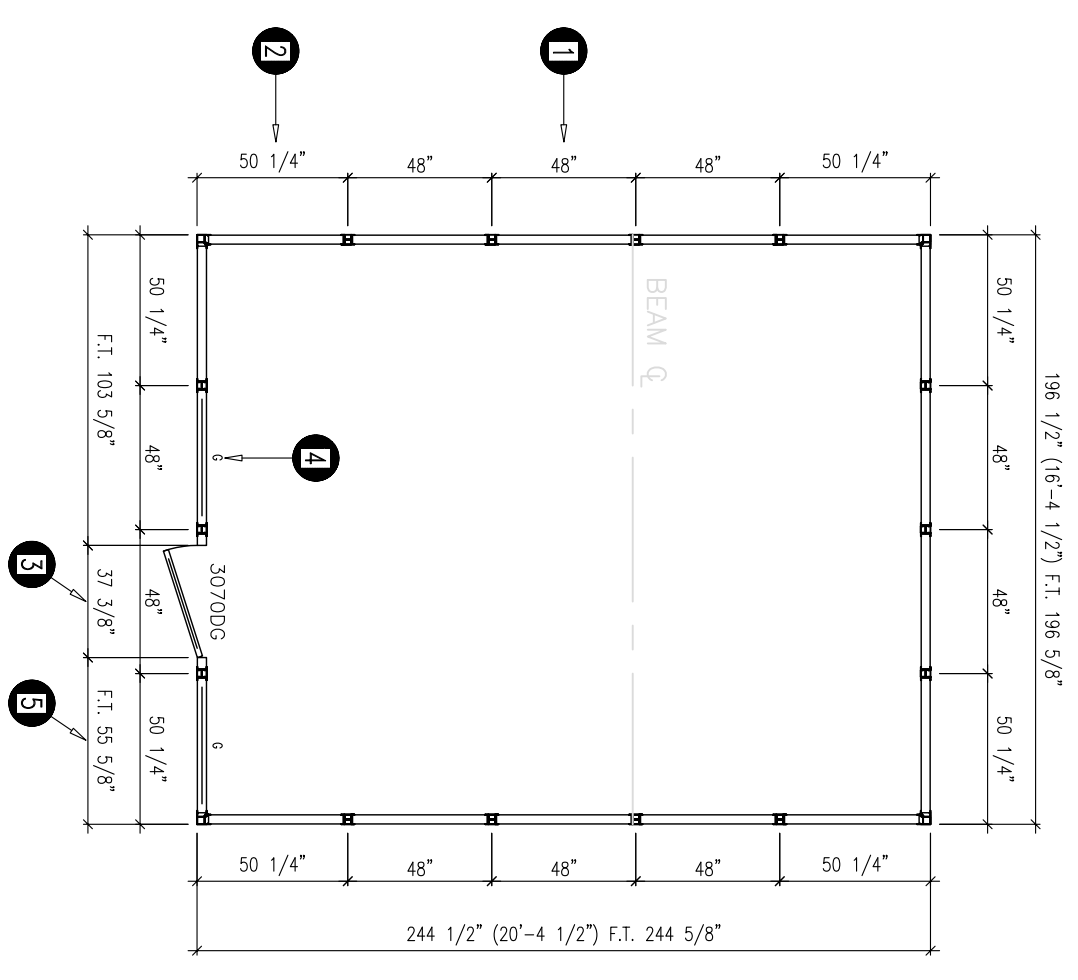
18080 CHESTERFIELD AIRPORT ROAD, CHESTERFIELD, MO 63005
 email: engineering@portafab.com (800) 325-3781

These documents were developed by PORTA-FAB Corporation. The contents of these documents are the proprietary property of PORTA-FAB Corporation. They are not to be copied or otherwise used without the express written permission of PORTA-FAB Corp.
 Copyright 2003 PORTA-FAB Corporation

ABC MATERIAL HANDLING	XYZ MANUFACTURING	P.O. 1234
OMNIFLEX 300		
PANEL HEIGHT: 8'-0"		
FINISH: INT: CHAMPAGNE EXT: CHAMPAGNE		
PANEL CONSTRUCTION: INT: 1/4" VINYL HARDBOARD 2 9/16" POLYSTYRENE EXT: 1/4" VINYL HARDBOARD		
DRAWN BY: TB	DATE:	
CHECKED BY:	SHIP DATE:	
SCALE: 1/4" = 1'	REVISED:	
ORDER NO. 28-12345		
SHEET NO. 10F 1		



FLOOR PLAN



DRAWING FEATURES

- 1) Stud-to-stud centerline of full size panel. Panel width is 44 7/8" unless noted by F.P.
- 2) Dimensions indicating the outside corner to centerline of stud.
- 3) Location of door and dimensions for door opening.
- 4) Symbol G represents location of an optional fixed window.
- 5) Exact dimensional length of floor track sections designated by F.T.
- 6) Dimension for main runner placement from interior of wall.
- 7) Dimension for cross tee placement from interior of wall.
- 8) Location of dust cover support beam (if necessary).
- 9) Dimensions for dust cover placement.
- 10) Dimensions for beam braces.
- 11) Description of wall systems, panel height and panel color selections.
- 12) Distributor purchase order number given to Porta-Fab.
- 13) Porta-Fab drawing or job number. Refer to this number with all correspondence.

SUPPLIER MAKES NO REPRESENTATION THAT THE BUILDING OR COMPONENT DEPICTED HEREIN COMPLIES WITH APPLICABLE CODES OR ORDINANCES; PURCHASER SHOULD VERIFY COMPLIANCE WITH SUCH CODES AND ORDINANCES.