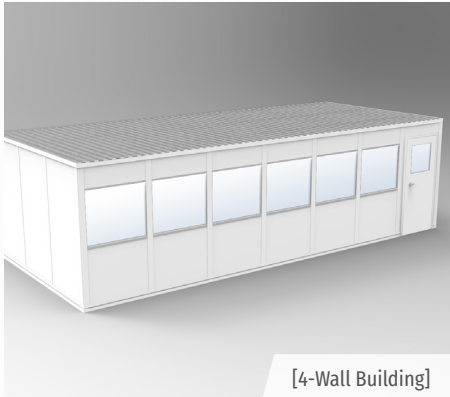


# 12x28 Standard "Quick-Ship" Buildings

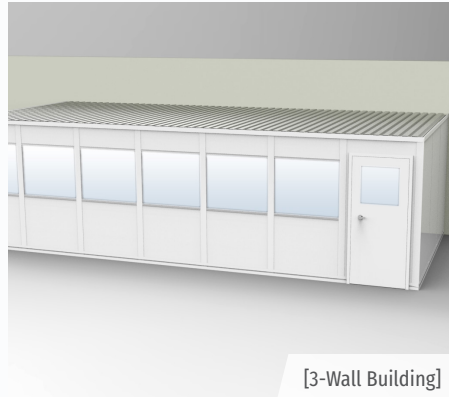
**PORTAFAB**  
Modular Building Systems

## Standard "Quick-Ship" Modular Offices & Buildings

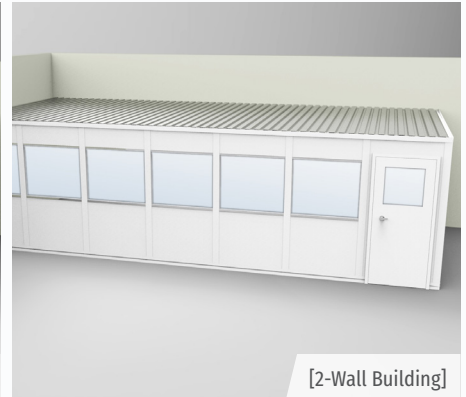
Save costs, labor, and materials with modular construction. PortaFab's "quick-ship" modular units come as two, three, or four wall buildings created from the OmniFlex steel stud framing system.



[4-Wall Building]



[3-Wall Building]



[2-Wall Building]

### 12'x28' Standard "Quick-Ship" Building Specifications

<b>Width (feet)</b>	28' 4-1/2" (28' 1-1/4" for 2 & 3 Wall)	<b>Door Style</b>	Swing
<b>Depth (feet)</b>	12' 4-1/2" (12' 1-1/4" for 2 & 3 Wall)	<b>Frame Construction</b>	Painted Steel
<b>Height (feet)</b>	8' or 9'	<b>LED Light Fixtures</b>	6 (Based on 4-wall Building Configuration)
<b>Color / Finish</b>	Gray or White	<b>Outlets</b>	8 (Based on 4-wall Building Configuration)
<b>Approval / Regulations</b>	<b>Fire &amp; Sound Panel:</b> R-11, STC-31 (Class A per ASTM-E84)	<b>Limited Warranty</b>	1 Year
<b>Assembly</b>	Unassembled	<b>Type</b>	4-Wall, 3-Wall or 2-Wall
<b>Clearance Height Interior</b>	7' 6" With 8' Panels 8' 6" With 9' Panels	<b>Wall Construction</b>	Fire and Sound (F&S) Panels With 1/2" Vinyl Gypsum on Polystyrene Core
<b>Door Size</b>	3' x 7'	<b>Wall Thickness (inches)</b>	3"

Pre-engineered modular buildings offer a number of benefits when compared to traditional construction:

#### Ease of Coordination

PortaFab will handle the entire installation of your building, so that you do not need to spend valuable time away from your job.

#### Reduced Labor Costs

Prefabricated components can be installed quickly, resulting in a lower cost of labor.

#### Consistent Quality & Appearance

Our pre-engineered components can be integrated with one another to maintain a seamless and professional appearance.

#### Adaptability

Our flexible buildings can be expanded or relocated quickly and easily to grow with your company.

#### No Mess

Pre-engineered components result in a cleaner installation with minimal disruption to surrounding facility.

#### Green

Since construction waste is reduced with modular construction, a facility can earn LEED points to improve its Green Building Rating.

# 12x28 Standard "Quick-Ship" Buildings

**PORTAFAB**  
Modular Building Systems

Our complete prefab kits include everything needed for a basic modular inplant office. All models include:

- Interchangeable Wall Panels (Fire & Sound Panels)
- Acoustical Drop Ceiling
- Steel Roof Deck
- Framing (Wiring Posts, Corner Posts, Top & Bottom Channels)
- Connecting Hardware
- Knocked-down Steel Door With or Without Window

## Standard "Quick-Ship" Building Options

### Doors and Hardware

<b>Steel Door Assembly</b>	<ul style="list-style-type: none"> <li>• 3070 - 20 Gauge Steel Door Assembly - Flush</li> <li>• 6070 - 20 Gauge Steel Double Door Assembly - Flush</li> </ul>
<b>Glass</b>	1/4" Clear Tempered Safety Glass
<b>Threshold</b>	Aluminum Threshold - 4"
<b>Door Louver</b>	Door Louver - 16" x 12"
<b>Misc. Hardware</b>	Door Closer, Kickplates

### Window Assemblies

<b>Fixed Window</b>	4' or 2' Nominal Width x 3' Nominal Height Glazed With 1/4 Clear Tempered Safety Glass
<b>White Sliding Window</b>	3' x 3' Nominal Dimensions, Installed in Wall Panel Glazed With 1/8" Clear Tempered Safety Glass

### Roof and Ceiling Systems

<b>Acoustical Ceiling</b>	2' x 4' x 5/8" Mineral Fiberboard With White Steel Grid System
<b>Ceiling Insulation</b>	6" Fiberglass (R-19)
<b>Roof Deck</b>	<ul style="list-style-type: none"> <li>• Up to 12' Length</li> <li>• 16' Long Dust Cover Support Beam</li> <li>• 20' Long Dust Cover Support Beam</li> <li>• Dust Cover Support Angle - 12' (Must Be Used Along All Existing Building Walls)</li> </ul>

### Climate Control

<b>HVAC Units</b>	12,000 Btu Cool / 11,600 Btu Heat (230V) or 8,000 Btu Cool / 4,200 Btu Heat (115V)
<b>Framed Cutouts</b>	Installed or Material Only (Size Not to Exceed 12 L.F.)

### Electrical Components

<b>Light Fixture</b>	2' x 4' LED Flat Panel Fixture
<b>Outlet or Switch</b>	<ul style="list-style-type: none"> <li>• Outlet Without Wiring (15 amp)</li> <li>• Switch Without Wiring (15 amp)</li> </ul>
<b>Circuit Breaker Boxes</b>	<ul style="list-style-type: none"> <li>• 4-Space</li> <li>• 6-Space</li> <li>• 10-Space</li> </ul>
<b>Exhaust Fan</b>	270 cfm Ceiling Mounted Exhaust Fan - Includes Fan, Duct Kit, & Switch (Louver in Door Recommended for Maximum Air Flow)
<b>Upgrade to Modular Electric Package</b>	Lights, Outlets (20 amp), and Switch (20 amp)